

HYUNDAI ELEVATOR
COMPANY PROFILE



From mobility technology to a partner in life

Elevators and escalators that connect spaces and people-

Material handling systems, parking systems, and platform screen doors (PSDs) that establish corporate competitiveness and social infrastructure quickly, conveniently, and effectively.

When we realize technology that is even more special, your life becomes special and more enriched.

Beyond the implementation of advanced technology, Hyundai Elevator will be always with you as a reliable partner.

Contents

01	About Hyundai Group
03	Hyundai Elevator's Core Capabilities
09	Hyundai Elevator's Current Status
11	Hyundai Asan Tower and R&D Center
13	History and Key Achievements
	Solutions for the Most Efficient Mobility
17	Moving Solutions Division
19	System Solutions Division
21	Services Division
	Management for Sharing and Mutual Growth
23	Sustainability Management
25	Global Network

When Hyundai moves, the world moves.

In a rapidly changing domestic and global management environment, Hyundai Group is starting to soar up to become one of the best global companies. When Hyundai moves, the world moves.

Group Vision

Management Philosophy

Create a prosperous future through challenges and creative thinking to make our hopes and dreams come true.

Management Vision

Hyundai that changes the world.

For the Korean citizens who watched Hyundai Group with unflinching confidence as we developed together, Hyundai Group will be a true model of the Korean economy. Furthermore, Hyundai Group will be our national pride and joy as one of the best companies in the world.



Financial Solutions



Hyundai Securities
Hyundai Savings Bank
Hyundai Investment Network
Hyundai Research Institute
Hyundai Asset Management



Space Mobility Solutions



Hyundai Elevator



Infrastructure Solutions



Hyundai Asan



Integrated Material Handling Solutions



Hyundai Merchant Marine
Hyundai UNI



Service Solutions



Banyan Tree Club & Spa Seoul

Contents

01	About Hyundai Group
03	Hyundai Elevator's Core Capabilities
09	Hyundai Elevator's Current Status
11	Hyundai Asan Tower and R&D Center
13	History and Key Achievements

	Solutions for the Most Efficient Mobility
17	Moving Solutions Division
19	System Solutions Division
21	Services Division

	Management for Sharing and Mutual Growth
23	Sustainability Management
25	Global Network

Global Top Technology

Hyundai Elevator has the world's best technology.

By continuously challenging ourselves to develop new technology with excellent human resources and industrial-educational cooperation, Hyundai Elevator has received much recognition for our world-class technology in various fields. More than just a Korean company, Hyundai Elevator is leaping forward to become one of the world's leading companies based on our technological prowess and the extensive experience that we have accumulated domestically and internationally.

Global No.1

World-class elevator technology

In 2010, Hyundai Elevator independently developed THE EL 18, the fastest ultra-high speed elevator in the world with a maximum speed of 18 meters per second, with our own technology. This world-class elevator can travel a distance of up to 600 meters (more than 150 floors). With a 9-phase synchronous motor drive system, pressure control system, and special safety devices applied, it is recognized for its outstanding performance in terms of safety and quality.



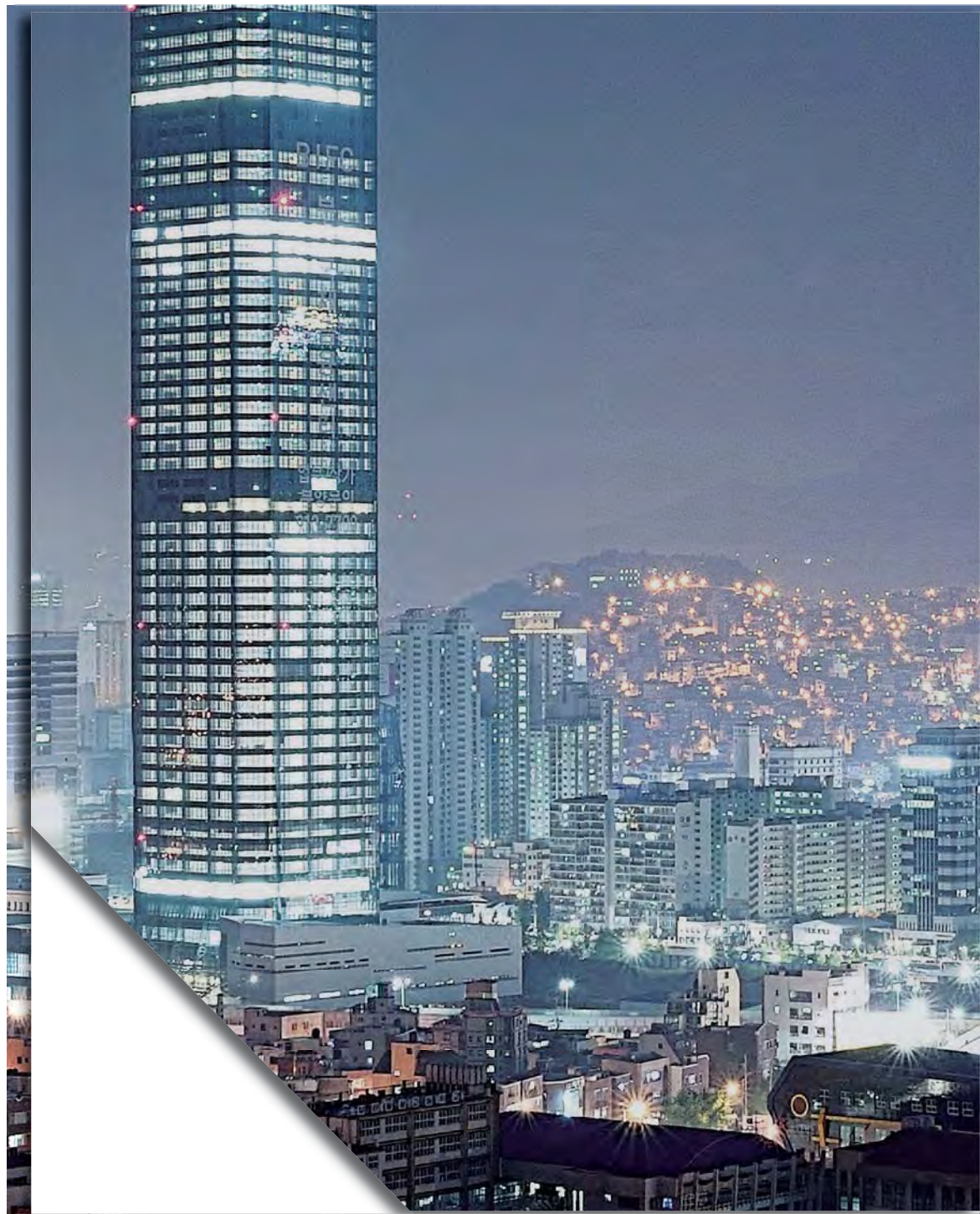
No. 1 on the Korea Brand Power Index (K-BPI)!

Quality and safety certified by the world

Hyundai Elevator has received much recognition for its technological skills as it holds an accredited ISO 9001 Quality Management System certification issued by DNV GL for all products from elevators (elevators, escalators, and moving walkways), parking systems, and material handling systems to platform screen doors (PSDs). We also secured international credibility in the safety sector by obtaining the international occupational health and safety management system specification, "OHSAS 18001".



ISO 9001 OHSAS 18001



Explore a new world
with IT convergence

Smart Management System

Hyundai Elevator connects people with space in a smart way.

We, at Hyundai Elevator, provide optimal mobility solutions by merging the world-class Korean IT technology based on electro-mechanical technology. We implement the smartest, most effective and smartest system by merging IT with the best core technology and expertise accumulated over the years from elevators and escalators to material handling systems, parking systems, and platform screen doors.



Explore a new world
with IT convergence

Smart elevator system created by IT technology

Our elevator systems provide the best value by connecting to IT on top of the core technologies based on electro-mechanics. The destination control system improves elevator efficiency and helps passengers get to their destinations faster by calculating the number of passengers and the departure and destination floors, and designating the optimal elevator. The system protects personal safety and privacy by connecting to the building security management system.

IT convergence system solutions that establish social infrastructure

Hyundai Elevator provides optimized IT convergence system solutions from consulting to manufacturing and installation to establish social infrastructure. We create new value by converging our core technology and IT in various fields from the material handling systems that increase corporate competitiveness and the parking systems that reduce city parking problems with innovative ideas and technology to the platform screen doors (PSDs) that enable citizens to use subways conveniently and safely.



IT Convergence System Solutions





Explore a new world
with IT convergence



Change the world with green technology
that considers the global environment

Energy Efficiency & Eco-friendly Technology

With Hyundai Elevator's green technology, man and nature coexist.


Hyundai Elevator products realize an eco-friendly spirit beyond function and efficiency. Hyundai Elevator considers the health of people and our global environment by using eco-friendly materials and energy-saving technology throughout the manufacturing process (development, manufacturing, installation, and destruction).

Change the world with green technology
that considers the global environment

A class of the TÜV

Groundbreaking energy-saving technology

LOWATT, a regenerative inverter that recycles the energy generated by an elevator, is recognized as the core elevator energy-saving technology that can increase energy efficiency up to 77.5%. Hyundai Elevator received Germany's Class "A" energy efficiency certificate for major products by applying various energy-saving technologies including a regenerative inverter.

 VDI 4707
Class "A" from TÜV, Germany

Low carbon green growth technology

Hyundai Elevator is committed to environment-improving activities based on the internationally recognized ISO 14001 Environmental Management System standard. Moreover, Hyundai Elevator has improved environmental performance in terms of energy savings, air pollution, water quality, and wastes by acquiring the Green Management System (GMS) certification that covers environment-related ISO specifications including environmental management, greenhouse gas, energy resources, and corporate social responsibilities. We are considered a low carbon, green growth company for having established a sustainable management system that can respond to the environmental regulations of advanced countries.

 ISO 14001
Environmental System Certification

 GMS
Green Management System Certification

ISO 14001, GMS

Change the world with green technology
that considers the global environment

Design the future with a passion for the best in the world

Company Overview

Established : May 23, 1984

Domestic business sites : Head office in Icheon, Gyeonggi-do, Seoul Office, and 12 other regional branches

Current status of overseas companies and branches : China (Shanghai), Brazil, Malaysia, Indonesia, India, and Vietnam

Business Fields

Elevator Division :Elevators, escalators, and moving walkways

S/S Division (System Solutions) :Platform screen doors (PSDs), material handling systems, parking equipment (automobiles & bikes), auto-sliding canopies, Gap Zero as safety floor boards, etc.

Service Division :Elevators, material handling systems, parking systems

Current Status of Business Sites



Head Office
(Icheon, Gyeonggi-do, Korea)

- (1st, 2nd, 3rd factories) 46,484 m² of advanced facilities
- Producing elevators, material handling systems, parking systems, platform screen doors (PSDs), etc.



Seoul Office
(Yeonji-dong, Jongno-gu, Seoul, Korea)

- Domestic Elevator Business Unit (Sales Division, Sales Strategy Team, Technical Sales Division), Overseas Business Unit, System Solutions (S/S) Sales Division, Services Management Division, Public Relations Division, Compliance Division, Planning & Finance Division



Factory in Shanghai
(Shanghai, China)

- 28,716 m² of advanced facilities
- Producing elevators and escalators
- Elevator test tower (72 meters tall)



Factory in Brazil
(São Leopoldo, Brazil)

- 13,337 m² of advanced facilities
- Producing elevators

Main Facilities



Hyundai Asan Tower

- World-class elevator test tower



Hyundai Customer Care Center (CCC)

- Real-time remote management service (HRTS) and customer service





Hyundai Asan Tower

Completed in April 2009 as the world's tallest elevator test tower, the Hyundai Asan Tower is the cradle of new elevator technology development where the product safety and reliability can be thoroughly verified in an environment most similar to high-rise buildings.

Size

A world-class elevator test tower that is 205.2 meters above ground level and 15 meters below ground level for a total height of 4,351 m²

Composition

- Chung Mong-hun R&D Center : Noise and Vibration Laboratory, Load Laboratory, Public Relations Gallery, Material Handling Systems (MHS) Gallery, Auto-Parking Systems (APS) Gallery, Elevator Design Show Room
- Conference Room
- Elevator Machine Room
- Sky Lounge

Installed Elevators

THE EL18, an ultra-high speed elevator

The world's fastest elevator that can travel up to 18 mps

THE EL Duo, a double-deck elevator

An elevator with two cars vertically attached together with transport capacity improved up to 1.8 times more than single-deck elevator.

An observation elevator with speeds of 7 mps

The world's fastest elevator for observation

A shuttle elevator that indicates areas

A product where technology and emotions meet by indicating private areas through floor lighting

An elevator with handwriting-enabled OPB

An elevator with the latest IT method applied where passengers directly input the floor they want to move to by writing the floor number.



Chung Mong-hun R&D Center

Located on the first floor of the test tower, the Chung Mong-hun R&D Center is a comprehensive technological research center where overall performance can be tested. The Chung Mong-hun R&D Center honors Hyundai Group's late Chairman, Chung Mong-hun, who led Hyundai Group to become a top-notch company through the development of technology, and expresses the aspirations of all employees to make Hyundai into a world-class company by putting forth all their efforts to develop the world's best technology.



Handwriting-enabled OPB elevator



Shuttle elevator (floor lighting)



Touchless button

History & Performance



Busan International Finance Center (BIFC) (66 floors)
Busan, Korea

Speed: 10mps(2 units)
9mps(3 units)
8mps(8 units)
No. of units: 46 units

Integrated Government Building of
Venezuela (56 floors)
Caracas, Venezuela

Speed: 8mps(2 units)
7mps(5 units)
6mps(4 units)
No. of units: 22 units



History and Key Achievements

13

14



Lerthai Center (33 floors)
Shijiazhuang, China

Speed: 6mps(4 units)
3.5mps(4 units)
3mps(2 units)
No. of units: 10 units



Iset Tower (30 floors)
Yekaterinburg, Russia

Speed: 6mps(2 units)
3.5mps(1 unit)
No. of units: 6 units

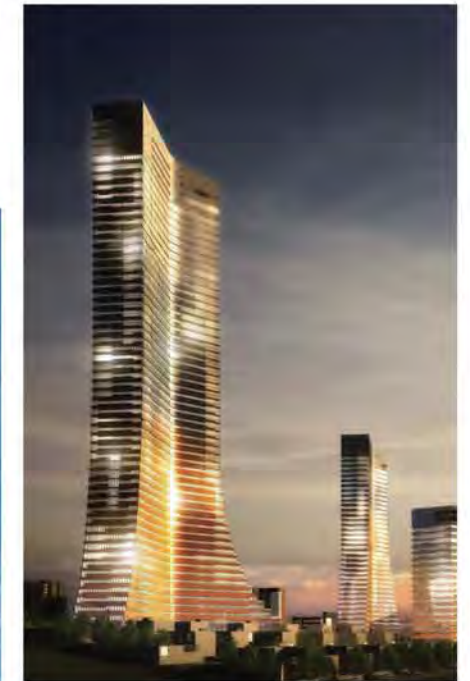


F&F Tower (55 floors)
Panama City, Panama

Speed: 4mps
No. of units: 5 units

Hotel Le Meridien (58 floors)
Istanbul, Turkey

Speed: 4mps(7 units)
3.5mps(5 units)
No. of units: 53 units



G-Tower in Songdo (33 floors)
Icheon, Korea

Speed: 6mps(2 units)
No. of units: 18 units

Foundation & Jump

- 1984 Company was established.
- 1993 Founded an overseas company in China.
- 1995 Awarded Grand Prize for Customer Satisfaction and Management Innovation.
- 1996 Listed on the Korea Stock Exchange (KRX).
- 1998 Obtained ISO 9001 & 14001 Integrated Management System certifications from DNV in the fields of elevators, parking systems, and material handling systems.
- 1999 Obtained CE marks from the DNV for all escalators.

Growth & Development

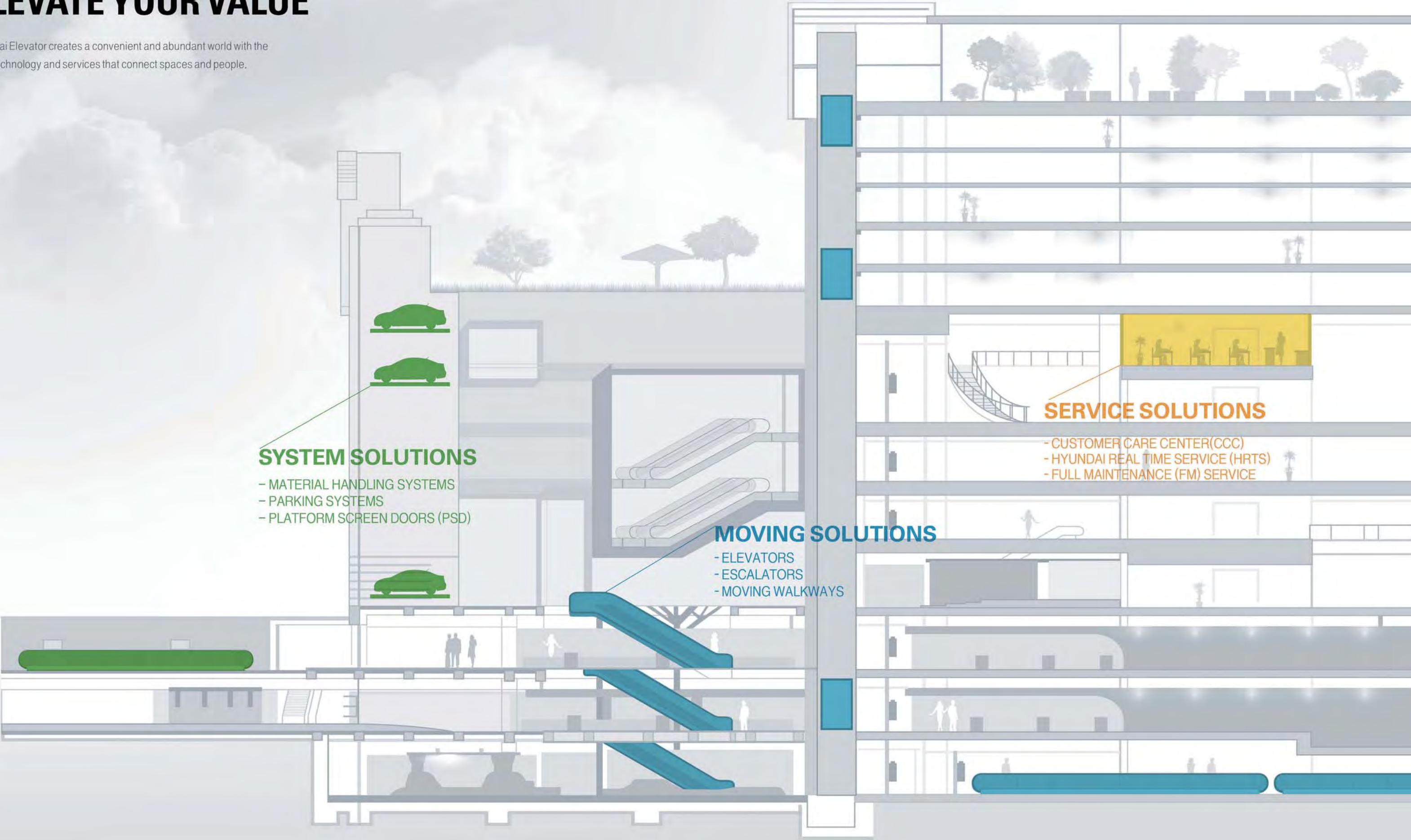
- 2002 Obtained CE marks from DNV for all elevators.
- 2003 Installed platform screen doors (PSDs) for the first time in Korea.
- 2004 Obtained ISO 9001 & 14001 certifications from DNV in the field of PSDs.
- 2005 Awarded Grand Prize for Respected Company and Businessman.
- 2006 Selected as an excellent company in labor-management culture.
- 2007 Selected by the Ministry of Trade, Industry, and Energy for 10 consecutive years as the most outstanding company in terms of quality competitiveness.
- 2008 Founded an overseas company in Indonesia.

Becoming the World's Best

- 2009 Founded an overseas company in India.
Completed the elevator test tower, Hyundai Asan Tower (205 meters).
Developed and installed the world's fastest observation elevator with a speed of 7 mps.
- 2010 Developed and installed the world's fastest elevator with a speed of 18 mps.
Developed and installed the world's fastest double-deck elevator with a speed of 10 mps.
Received Germany's Class "A" elevator energy efficiency certificate from TÜV.
- 2012 Obtained OHSAS 18001 (Occupational Health & Safety Assessment Series) and GMS (Green Management System) from DNV.
Awarded the iF product design award for 2012 by the International Forum Design Awards for the Destination Control System.
- 2013 Obtained UL marks for the internationally certified safety standards for the U.S. and Canada.
Founded an overseas company in Brazil.
Founded an overseas company in Malaysia.
- 2014 Founded an overseas company in Vietnam. / Completed the factory in Brazil.
Installed Korea's fastest elevators capable of ultra-high speeds of 10 mps (at the Busan International Finance Center).
- 2015 Installed and started operating Korea's first double-deck elevators (at the LG U+ building in Yongsan).
No. 1 on the 2015 Korea Brand Power Index (K-BPI) in the elevator industry (Korean Management Association Consulting).

ELEVATE YOUR VALUE

Hyundai Elevator creates a convenient and abundant world with the best technology and services that connect spaces and people.



SYSTEM SOLUTIONS

- MATERIAL HANDLING SYSTEMS
- PARKING SYSTEMS
- PLATFORM SCREEN DOORS (PSD)

MOVING SOLUTIONS

- ELEVATORS
- ESCALATORS
- MOVING WALKWAYS

SERVICE SOLUTIONS

- CUSTOMER CARE CENTER(CCC)
- HYUNDAI REAL TIME SERVICE (HRTS)
- FULL MAINTENANCE (FM) SERVICE

SUCCESS THROUGH PASSION

Why are all the state-of-the-art, high-rise buildings in the world with Hyundai Elevator? The reasons are Hyundai Elevator made unimaginable speeds a reality with an boundless enthusiasm for making premium elevators and realized energy-saving effects with new methods that did not exist before. Even in the future, Hyundai Elevator will increase the value of buildings around the world with its innovative quality and the development of technology.

Elevators



Ultra-high speed for passengers

THE EL 1080_ The world's first ultra-high speed elevator that provides premium value with speed, and performance responding to the world's highest building.

THE EL Duo_ A world-class double-deck system with two vertically attached cars that can be operated at the same time.

High speed for passengers

i-XEL_ A new concept elevator that realizes ride comfort and a high degree of safety by having a highly efficient permanent magnet synchronous motor, a gearless traction machine, and a high-precision control inverter driving system.

Mid-to-low speed for passengers

LUXEN_ An economical and eco-friendly product that gives ride comfort by applying an advanced gearless synchronous traction machine.

YZER_ An elevator with no machine room that allows a free layout for the hoistways and free design for the building skylines.

Special elevators

Observation elevators_ Provides an open, unhampered view with transparent glass on the elevator walls.

Hospital elevators_ Supports effective medical services with a comfortable ride and special features for the safety of the patients.

Freight & car elevators_ Provides speed and safety for users and a variety of features for building owners.

Marine elevators_ Provides world-class quality and availability for cruise ships, oil tankers, container ships, and various types of ships.

Escalators



New World Class_ An escalator with an elegant and compact design for an effective building space.

Millennium_ A product that minimizes vibrations, provides great ride comfort, and is suitable for shopping centers, hotels, and office buildings.

H-Series_ A high-performance and high-functioning escalator suitable for medium to large, high-quality building structures with a floor height of 10.5 to 15 meters.

Modular_ A product suitable for large high-rise buildings that adopt a modular method by adding actuators depending on the increase in height.

Moving walkways



They have been verified for safety and reliability in large transportation and traffic facilities such as international airports and subway stations.

Responded to customers' requests with a variety of shapes including horizontal, inclined, and compact moving walkways.



CONVENIENCE THROUGH INNOVATION

For modern people who live in the city, the city is the safest and most convenient space to live. Hyundai Elevator allows them enjoy to their lives by making it more convenient and safer to commute by cars and subways through the parking systems and PSD business. Hyundai Elevator has taken corporate competitiveness to the next level by implementing a material handling system with excellent competitiveness that goes from consulting to designing, repairing, and maintenance.

Material handling systems



Business Scope

- | Automated Storage and Retrieval Systems
- | Logistics Center
- | Automated Cold Storage
- | Air Cargo Systems
- | In-Process Automation Systems
- | Hospital Automation Equipment
- | Implementation of IT Consulting and Systems for Logistics

Main Supply Equipment

- | Stacker cranes
- | Robotic transfer vehicles (RTV)
- | Electrical monorail systems (EMS)
- | LGV & AGV
- | Pneumatic tube equipment
- | Lifters
- | Robots
- | Conveyors
- | Cross belt sorters
- | Slide shoe sorters
- | Steel belt sorters
- | Map Carts

Parking systems



Car Parking Systems

- | Elevator Type
- | Cart Type
- | Multiple Level Circulation Type
- | Integrated Parking Systems
- | Dual/Multi Level Type

Bike Parking Systems

- | Rotating Elevator Type
- | Sliding Elevator Type

Platform screen doors



Platform Screen Doors (PSD)

- A safety door system that blocks the subway tracks and platform
- | Full-closed / Semi-closed type
 - | Half height type

Gap Zero (Gap Zero)

- A safety floor board between the platform and the train door

Auto-sliding Canopy

- An automatic sliding canopy that operates when it rains or snows



VALUE THROUGH SERVICE

Hyundai Elevator's services are admired for their swiftness and accuracy. This is because ensuring safety through consistent service, as well as developing and installing good products, is one of the great values pursued by Hyundai Elevator. Hyundai Elevator's service is about taking care of customers the way we care for our families.

Customer Care Center

Hyundai CCC, advanced customer care center



Service Character ELE-COP



Hyundai Customer Care Center (CCC) is an advanced customer care center equipped with geographic information systems (GIS) that operates 24 hours a day, 365 days a year with its consultants and Hyundai Real Time Service (HRTS)-dedicated agents. The Center receives and handles calls when the elevators, material handling systems, and parking systems breakdown. They counsel customers and rapidly and accurately responds to questions about sales.

Hyundai Real Time Service (HRTS)

Hyundai Real Time Service (HRTS) is a premium management service that monitors the operating state of elevators nationwide through the Internet in real time 24 hours a day, 365 days a year. It also prevents failures in advance and shortens the failure-processing time through remote safety checks and failure processing.

Full Maintenance (FM) Service

As the most economical and most effective elevator maintenance service that increases the value of buildings, Hyundai Elevator is responsible for all services including comprehensive diagnoses, preventive inspections, parts replacement, and repairs to ensure the elevator equipment is being operated and maintained properly.





Hyundai Elevator's real value starts with managing sustainability.

SUSTAINABILITY MANAGEMENT



Compliance

For the sustainable growth of the company, Hyundai Elevator works hard to prevent any risk of legal violations that can happen during the course of normal business operations.

- Operation of training programs: All employees receive compliance training at least once a year.
- Designation of self-compliance manager through a relevant committee or council
- Regular inspection on compliance: Potential non-compliance risks in the business process are identified and prevented in advance.
- Hyundai Elevator obtained an AA grade for the compliance evaluation carried out by the Korean Fair Trade Commission in 2016 (first time for an elevator company).

Management for Sharing

With our slogan, 'a company grows with sharing', we are pursuing sustainable growth as socially responsible citizens by sharing the benefits we've received from society.

- Volunteer activities to show our love and share: Put these social contributions into action in real life through a variety of activities by 'donating a small portion of employees' salaries which will be matched by the company', and voluntary service for free meals.
- Social contribution activities with industry characteristics: Staying true to the image of the company and contributing to create the world together with others through activities that include free precision inspection services regardless of the manufacturer, campaigns for riding the elevator properly, elevator rescue training for 119 rescue workers, and a field trip for welfare organizations to industrial facilities, etc.

Ethics Management

Hyundai Elevator aims to be a trusted company that respects fair competition and the order of a free competitive market, and fulfills social requirements.

- Institution and operating system for practicing ethics management: Cyber ombudsman, ethics management self-diagnosis, pledge of compliance, compliance officer system, fair trade compliance program, and training on the practice of ethics management



GLOBAL NETWORK

You can meet Hyundai Elevator at landmarks in major cities all around the world.

Head Office and Factories

2091, Gyeongchung-daero, Bubal-eup, Icheon-si, Gyeonggi-do, Korea

Seoul Office

7-9 Floors, 194, Yulgok-ro, Jongno-gu, Seoul, Korea (Yeonji-dong)

Overseas Factories

[China] No. 182, Zhenxi Nanlu Liantang Zhen, Qingpu-Qu, Shanghai 201716, China

[Brazil] Avenida Atalbio Taurino de Resende, 4001, Arroio da Manteiga, City of São Leopoldo, State of Rio Grande do Sul, Brazil

Overseas Companies

[China] Shaghai Hyundai Elevator Co., Ltd. - No.182, Zhenxi Nanlu Liantang Zhen, Qingpu-Qu, Shanghai 201716, China

Hyundai (Shandong) Material Handling System Co., Ltd. - Room 1605, 97 building, 16th Xingyuan Road, Zhifu District, Yantai city, Shandong Province, China

[Vietnam] 36F Keangnam Landmark 72 Bld., Pham Hung Rd, Tu Liem Dist, Hanoi, Vietnam

[India] G-92, D-III Block, Midc, Chinchwad, Pune-411 019 Maharashtra State, India

[Indonesia] JL. Kesehatan Raya 48 8th Floor, Jakarta Pusat 10160, Indonesia

[Malaysia] Wisma Academy, Suite 5.01, 5th Floor, No 4A, Jalan 19/1 46300 Petaling Jaya, Selangor Darul Ehsan, Kuala Lumpur, Malaysia

[Brazil] Avenida Atalbio Taurino de Resende, 4001, Arroio da Manteiga, São Leopoldo, Rio Grande do Sul, Brazil

AFRICA

EGYPT

Tel : 20-1-066628331
E-mail : overseas@iet-hyundaelevator.com

ETHIOPIA

Tel : 251-911-503-000
E-mail : ieethiopia1@gmail.com

KENYA

Tel : 254-722-667984
E-mail : lyall@skytechelevators.com

LIBYA

Tel : 218-91-735-0745
E-mail : info@lee-hyundaelevator.com

NIGERIA

Tel : 234-803-7352222
E-mail : nicolas@orionelevators.com

TUNISIA

Tel : 216-71-886-980
E-mail : ideal.commercial@gnet.tn

ASIA

BANGLADESH

Tel : 88-017-13209212
E-mail : zahid@edgeworksbd.com

CAMBODIA

Tel : 855-23-888-199
E-mail : charles@ggear.com.kh

CHINA

[Head Office/Factory]
Tel : 86-21-6485-8600
E-mail : 2017407@hdel.co.kr

HONG KONG

Tel : 86-755-2585-5903
E-mail : hyundaisz@naver.com

INDIA

Tel : 91-20-3250-2190
E-mail : mmotwan@kcl.kineticindia.com

INDONESIA

Tel : 62-21-631-8444
E-mail : helindo@dnet.net.id

JAPAN

Tel : 81-3-3436-5117
E-mail : yoshimi-saitoh@daiko-s.co.jp

MALAYSIA

Tel : 603-6733-2999
E-mail : brian.lee@hem.com.my

MONGOLIA

Tel : 976-11-7015-3333
E-mail : khshigbaatar@hyundai-elevator.mn

MYANMAR

Tel : 959-400-444598
E-mail : info@integral-ltd.com

PHILIPPINES

Tel : 632-716-0905
E-mail : hyc@pltdsl.net

SRILANKA

Tel : 94-11-2629208
E-mail : rienzie@abansgroup.com

THAILAND

Tel : 660-2348-8046
E-mail : monchaika@loxley.co.th

VIETNAM

Tel : 84-4-6282-2978
E-mail : stpark@hdel.co.kr

EUROPE & CIS

ARMENIA

Tel : 971-4-440-49-27
E-mail : natalya@fd-jcb.am

AZERBAIJAN

Tel : 994-12-555-1744-46
E-mail : office@astexnika.com

KAZAKHSTAN

Tel : 7-717-253-8072
E-mail : dmitriy@hdel.kz

KYRGYZSTAN

Tel : 996-312-474205
E-mail : a918882@hotmail.com

MAKEDONIA

Tel : 90-216-488-8000
E-mail : hakan.ek@hmf.com.mk

POLAND

Tel : 48-61-820-8551
E-mail : maciej.dziukiewicz@omilifts.com

RUSSIA

(Moscow)
Tel : 7-495-514-00-32
E-mail : info@dvc.ru

(Vladi)

Tel : 7-423-222-98-73
E-mail : info@dvc.ru

TURKEY

Tel : 90-216-488-8000
E-mail : hakan.ek@hmf.com.tr

MIDDLE EAST

BAHRAIN

Tel : 973-17702468
E-mail : elevators@nassgroup.com

IRAN

Tel : 98-21-8869-8727-36
E-mail : jafari_hyundai2015@yahoo.com

IRAQ

Tel : 964-7901336498
E-mail : arjoon_co@yahoo.com

ISRAEL

Tel : 972-3-9630000
E-mail : elib@ledico.com

JORDAN

Tel : 962-79-5526-713
E-mail : m_bseiso@orange.jo

KUWAIT

Tel : 965-22-457-925
E-mail : info@deal-trade.com

OMAN

Tel : 968-9286-4334
E-mail : techno.hyundai@gmail.com

PAKISTAN

Tel : 92-21-34320601-5
E-mail : itcpk@gmail.com

QATAR

Tel : 974-436-6689
E-mail : info@ietg-hyundaelevator.com

SAUDI ARABIA

Tel : 966-530-970-318
E-mail : waqqas@hsc-ksa.com

SYRIA

Tel : 963-933-234134
E-mail : terzian@scs-net.org

UAE

Tel : 971-4-294-4475
E-mail : dubai@hnoe-hyundai.com

YEMEN

Tel : 967-1-450556
E-mail : waha62@hotmail.com

NORTH/SOUTH AMERICA

ARGENTINA

Tel : 5411-3220-2878
E-mail : oqueta@skylift.com.ar

BRAZIL

(Head office/Factory)
Tel : 55-51-3037-8686
E-mail : syyun@hdel.co.kr

(Sao paulo/Sales office)

Tel : 55-11-5102-3380
E-mail : mshin@hdel.co.kr

CHILE

Tel : 56-2-2635-3394
E-mail : leid@cyce.cl

COLOMBIA

Tel : 57-4-444-9297
E-mail : sgiraldo@solucionesverticales.com.co

CUBA

Tel : 537-699-3412
E-mail : habanajkim@gmail.com

DOMINICAN REPUBLIC

Tel : 809-566-7474
E-mail : cesar@eleva.com.do

ECUADOR

Tel : 593-2254-2831
E-mail : david.j@a-i.com.ec

GUATEMALA

Tel : 502-2388-0000
E-mail : cd.elevatec@grupomisol.com

MEXICO

Tel : 52-55-5663-2019
E-mail : yurich@inserttechnx.com

PANAMA

Tel : 507-230-3166
E-mail : asucra@elevadoresdelstmo.com

PERU

Tel : 51-1-436-1028
E-mail : yhjo7777@gmail.com

VENEZUELA

Tel : 58-212-232-8263
E-mail : ojsimon@gmail.com